

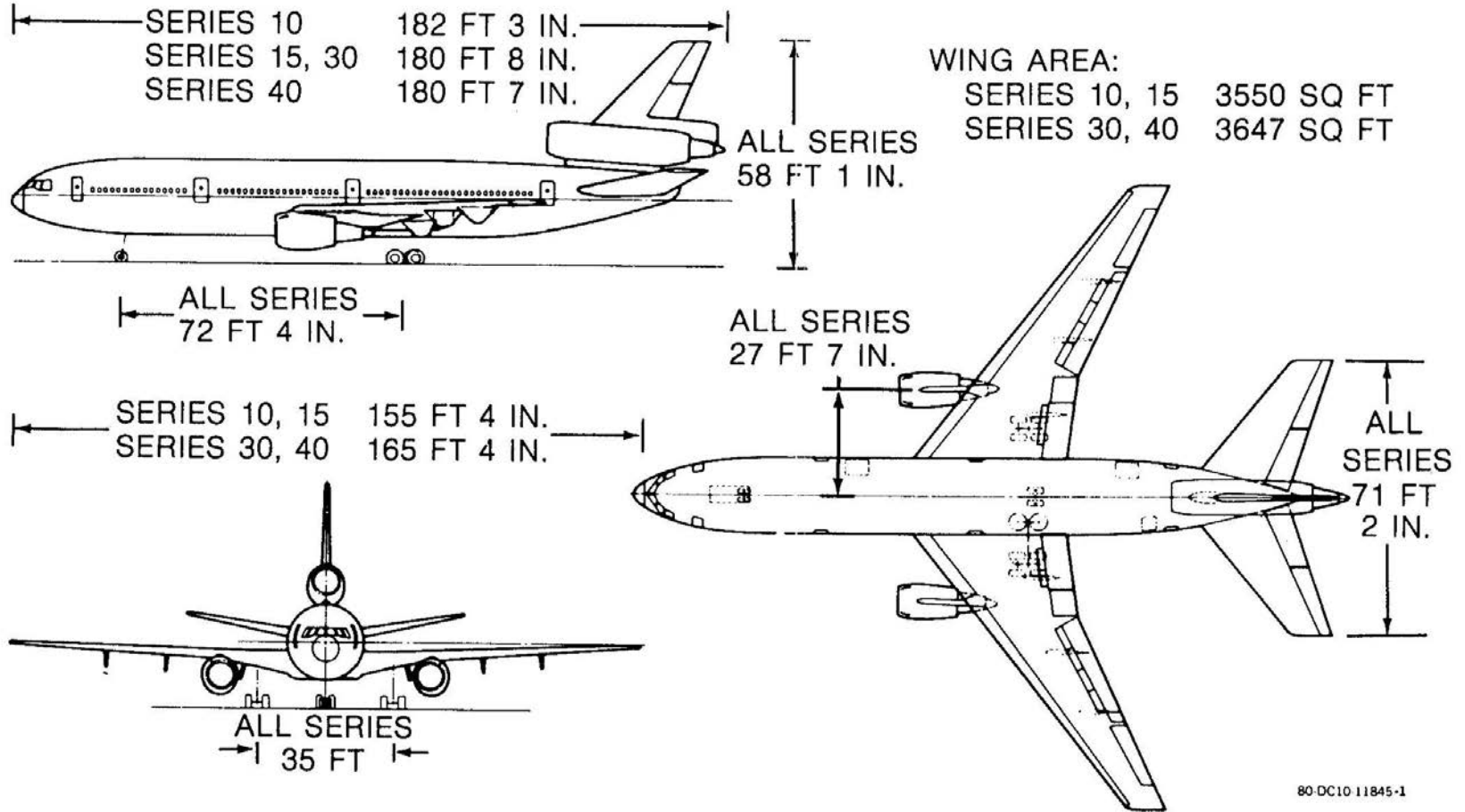
DC-10

StartupBoeing



DC-10 Series General Arrangement

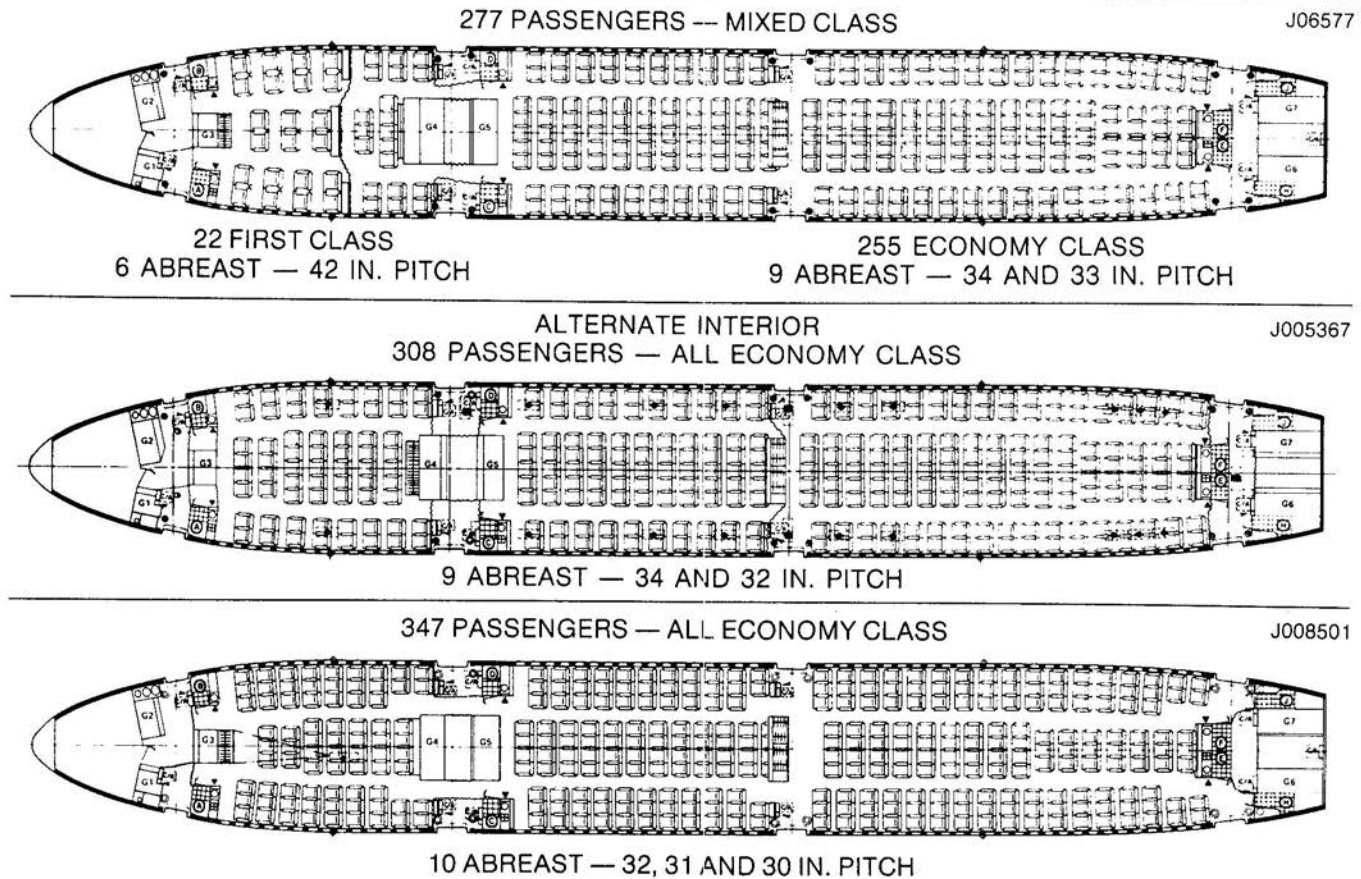
StartupBoeing



DC-10 Series Interior Arrangements

StartupBoeing

Upper Galley Configuration



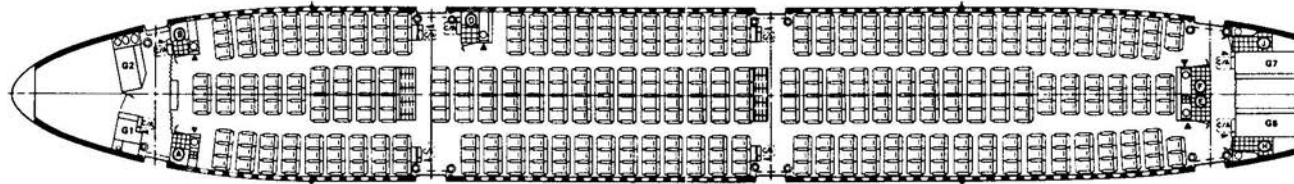
DC-10 Series Interior Arrangements

StartupBoeing

Upper Galley Configuration

375 PASSENGERS — ALL. ECONOMY CLASS

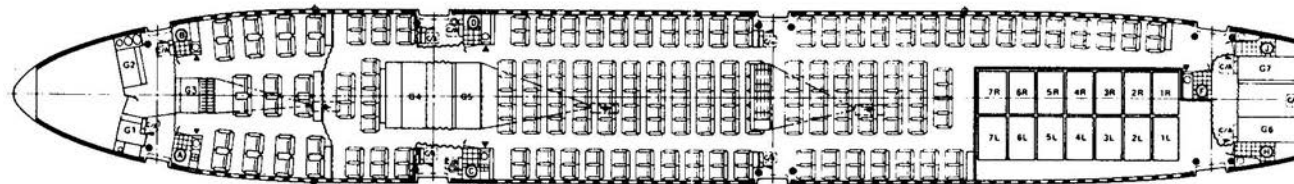
J008620



10 ABREAST — 33, 32 AND 31 IN. PITCH

215 PASSENGERS — MIXED CLASS WITH MAIN CABIN BAGGAGE

J006561



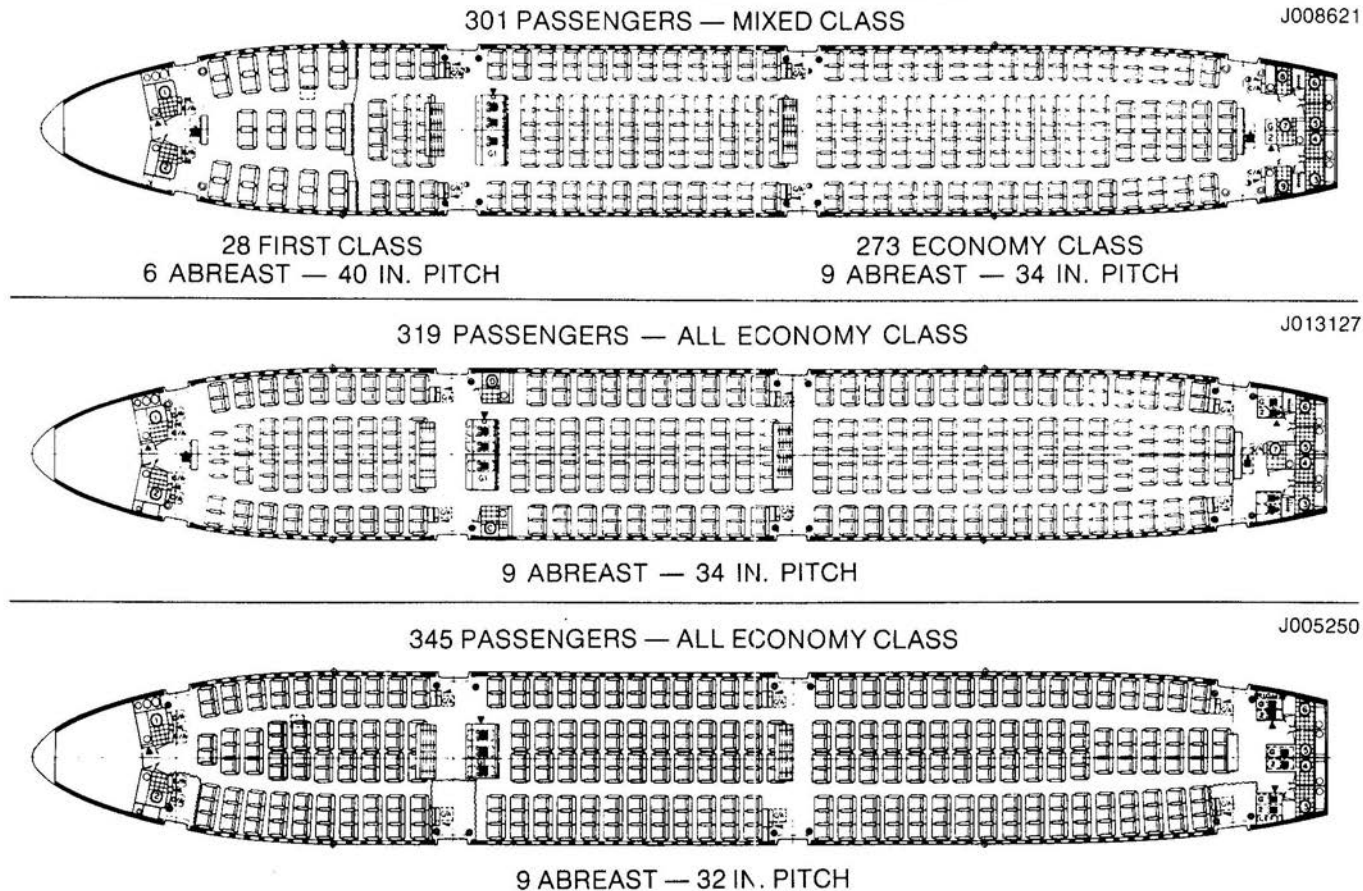
22 FIRST CLASS
6 ABREAST — 42 IN. PITCH

193 ECONOMY CLASS
9 ABREAST — 34 IN. PITCH

DC-10 Series Interior Arrangements

StartupBoeing

Lower Galley Configuration



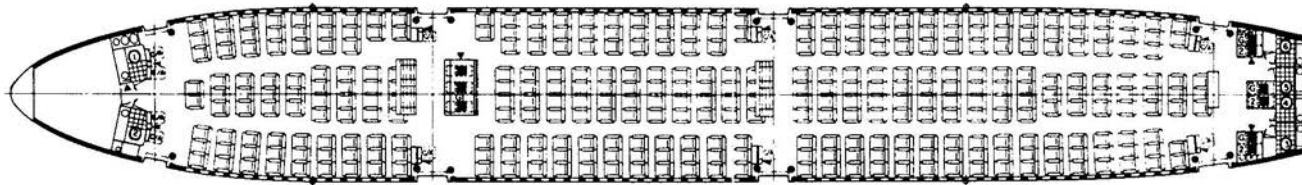
DC-10 Series Interior Arrangements

StartupBoeing

Lower Galley Configuration

345 PASSENGERS — ALL ECONOMY CLASS

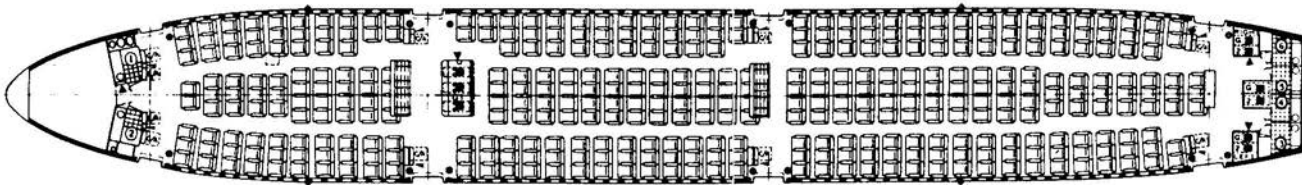
J006411



10 ABREAST — 35, 34 AND 33 IN. PITCH

380 PASSENGERS — ALL ECONOMY CLASS

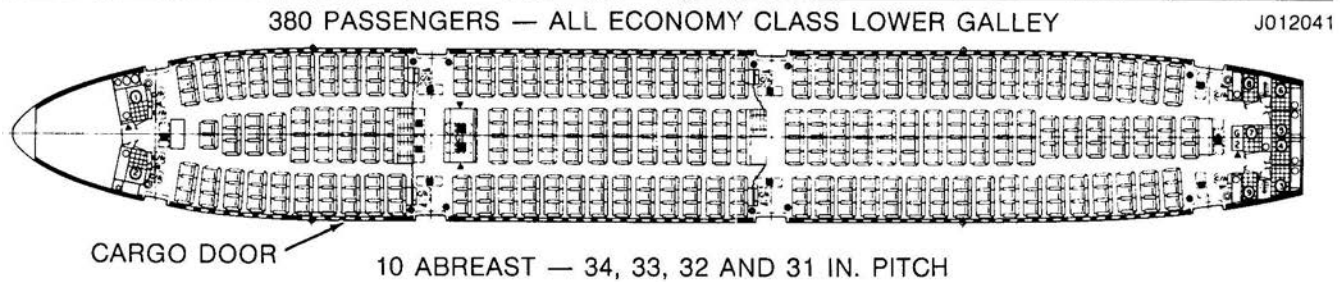
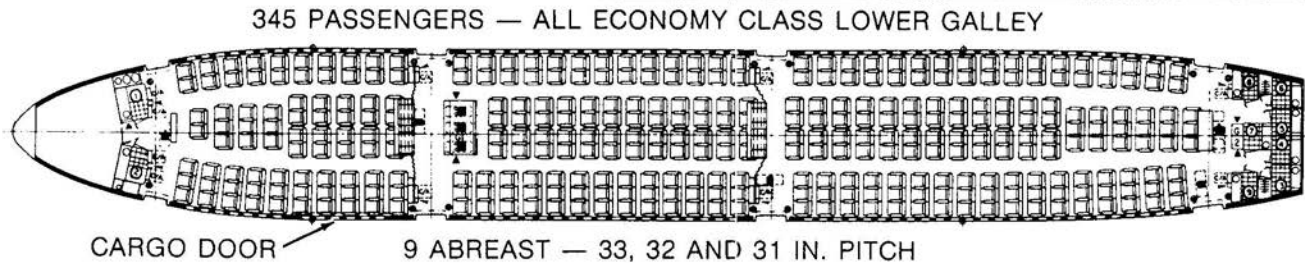
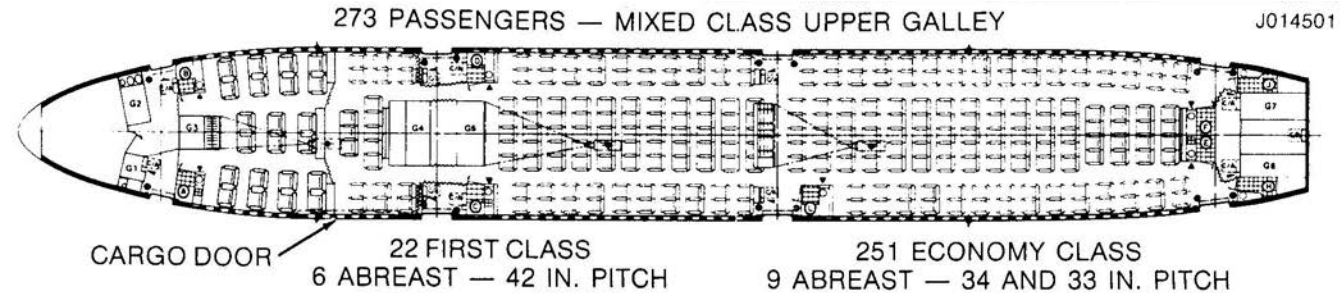
J005251



10 ABREAST — 33, 32, 31 AND 30 IN. PITCH

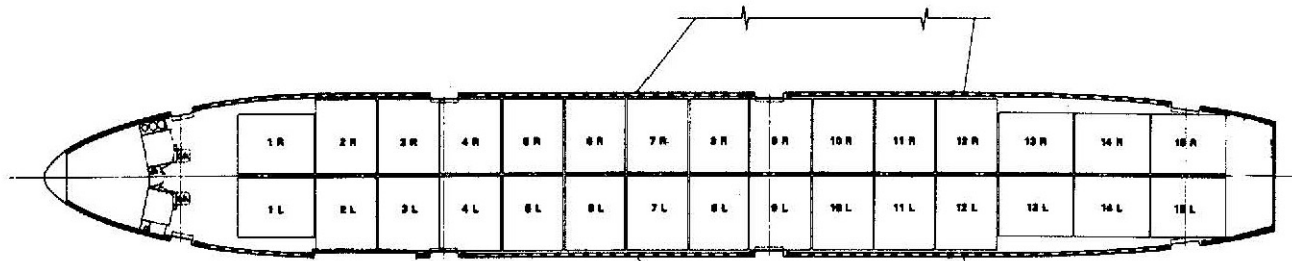
DC-10CF Series Interior Arrangements

StartupBoeing

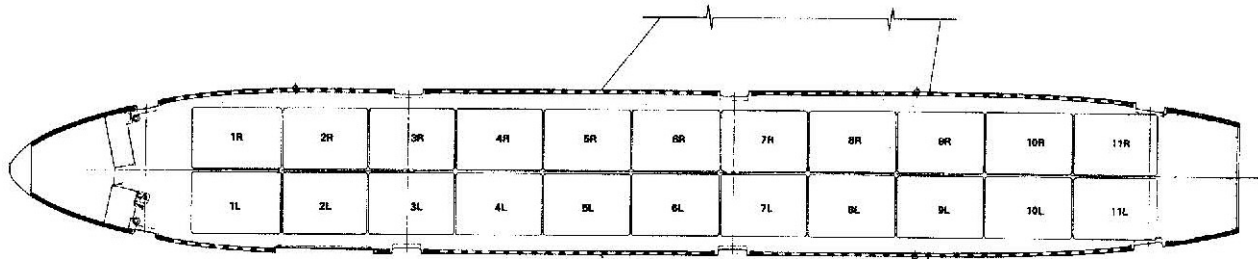


DC-10CF Series Interior Arrangements

StartupBoeing



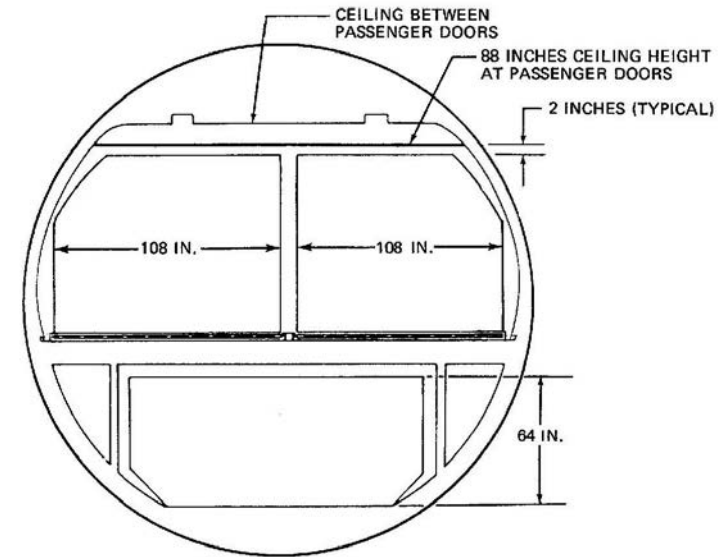
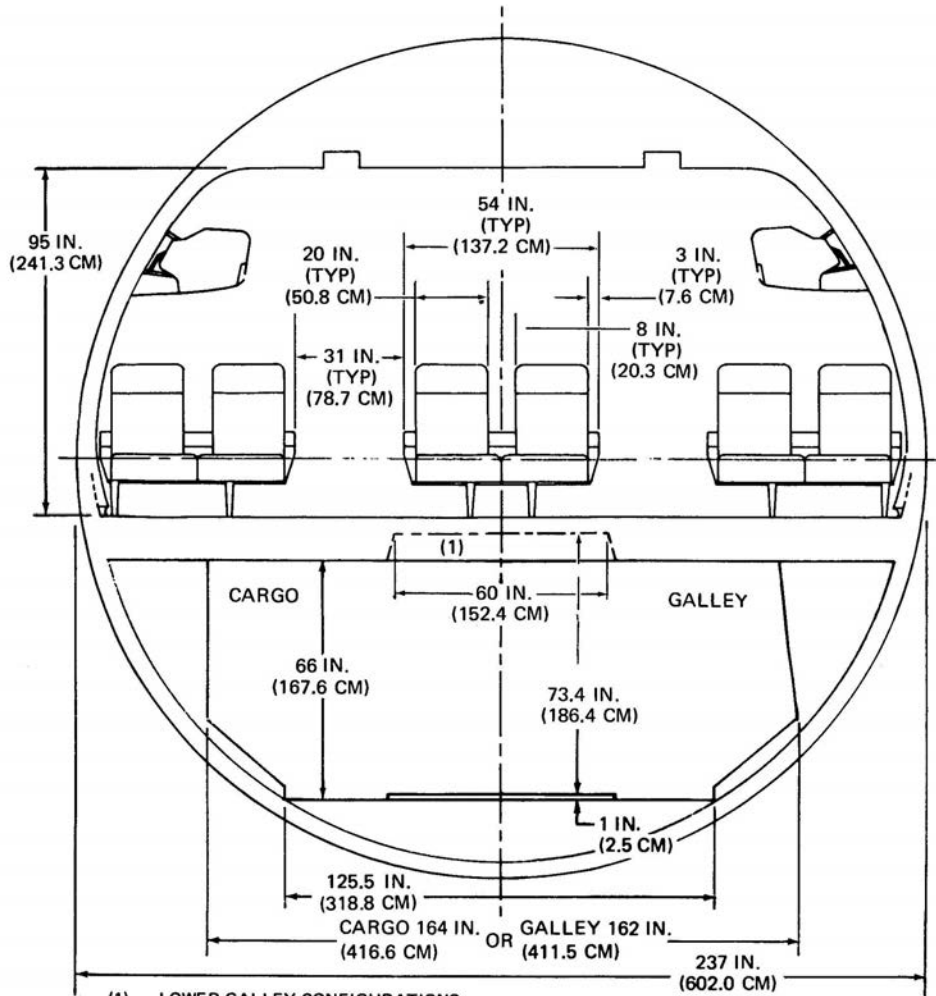
MAIN CABIN CARGO VOLUME
30 – 88 INCH x 108 INCH PALLETS
12,248 CU FT (346.81 CU M)



MAIN CABIN CARGO VOLUME
22 – 88 INCH x 125 INCH PALLETS
10,874 CU FT (307.95 CU M)

DC-10 Series Cross Section

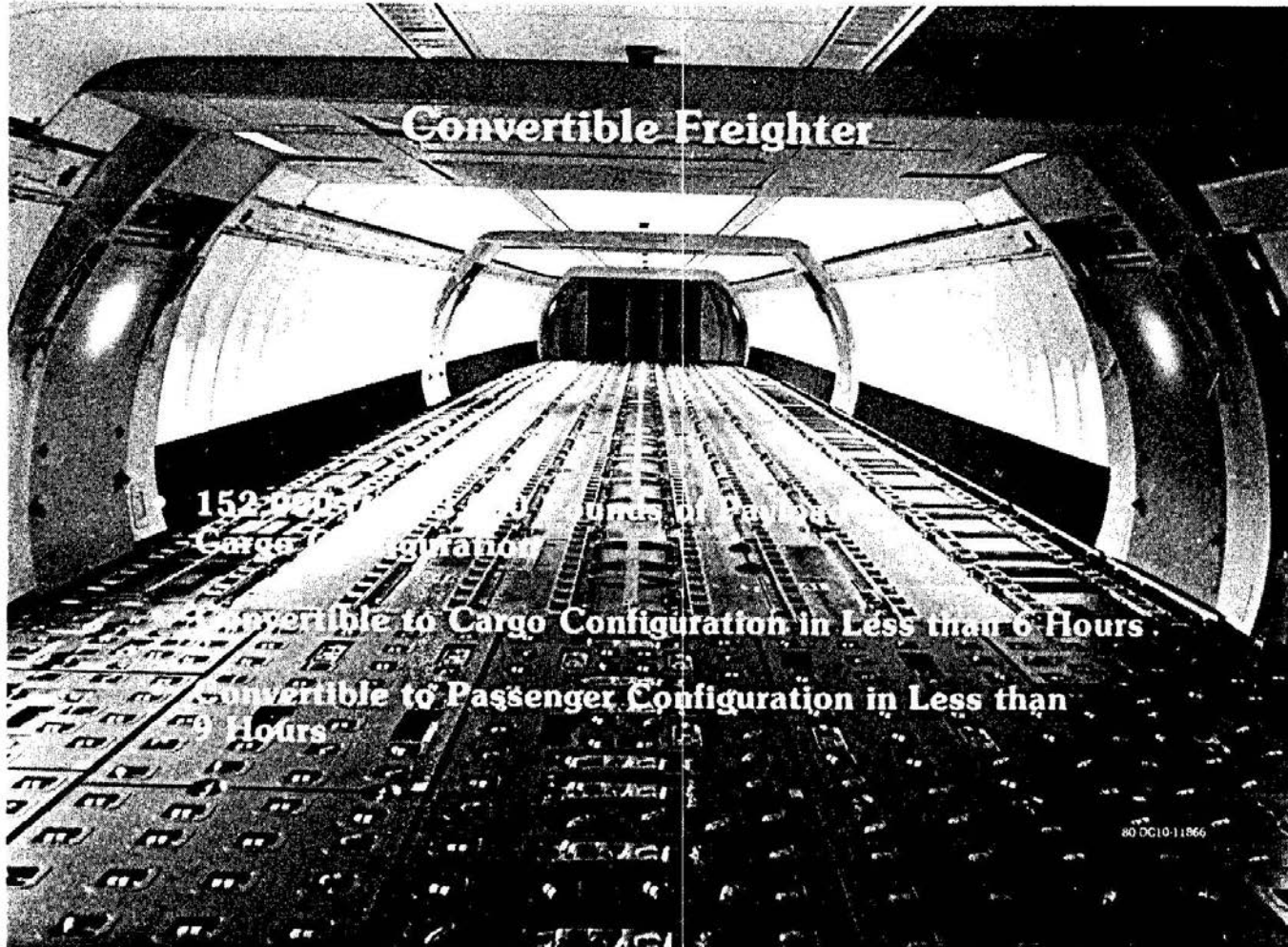
StartupBoeing



Convertible Freighter Configuration

DC-10CF Series Interior

StartupBoeing

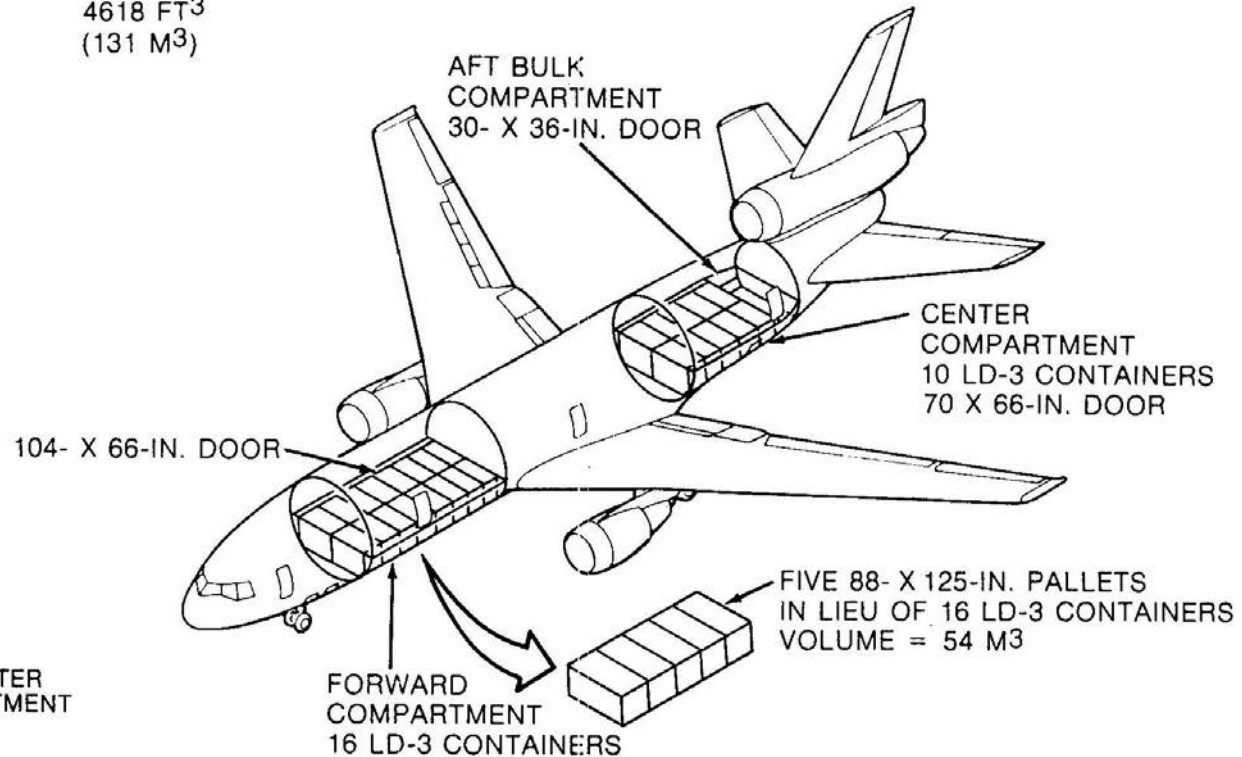


DC-10 Series Lower Hold Compartments

StartupBoeing

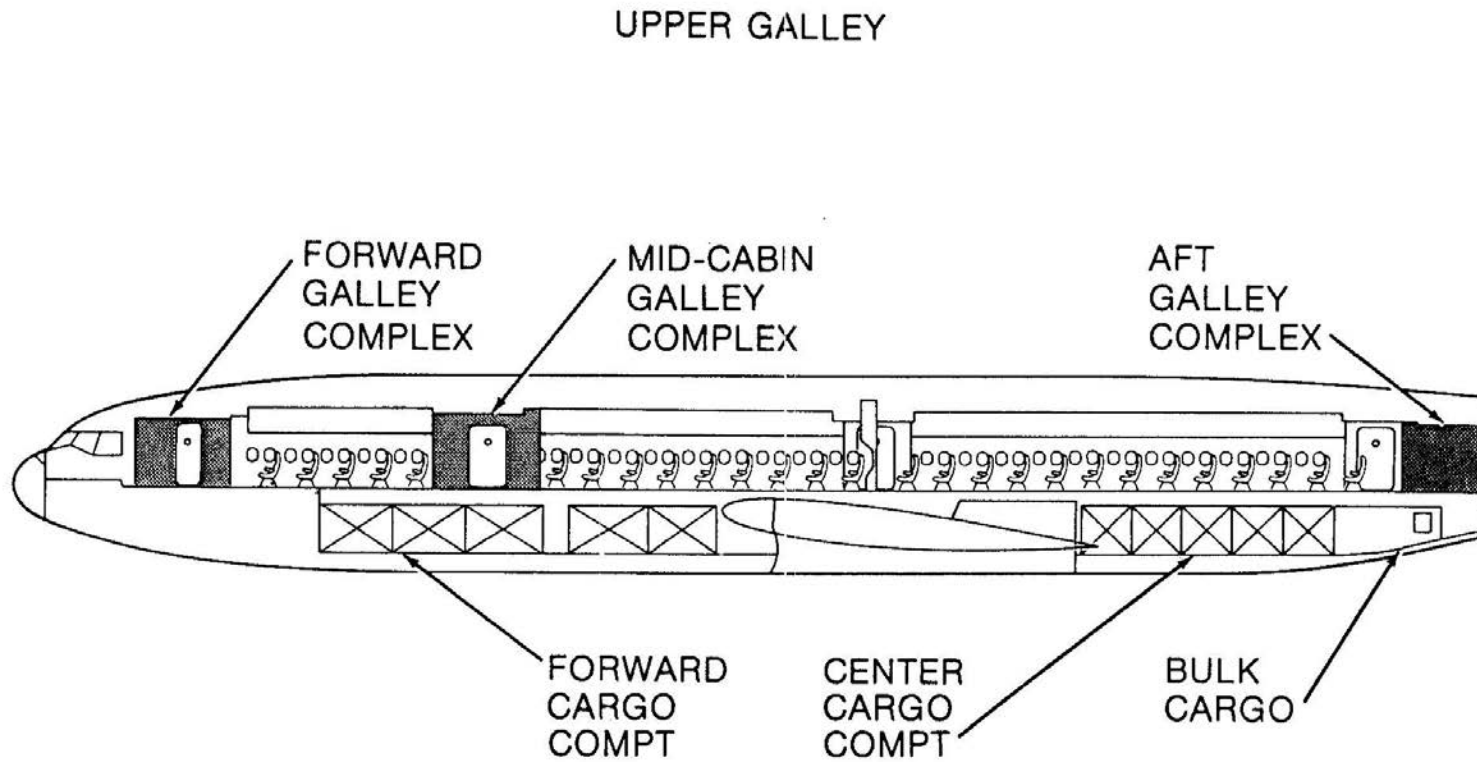
UPPER-GALLEY CONFIGURATION

26 LD-3 CONTAINERS	4108
BULK CARGO	<u>510*</u>
TOTAL	4618 FT ³ (131 M ³)



DC-10 Series Lower Hold Compartments

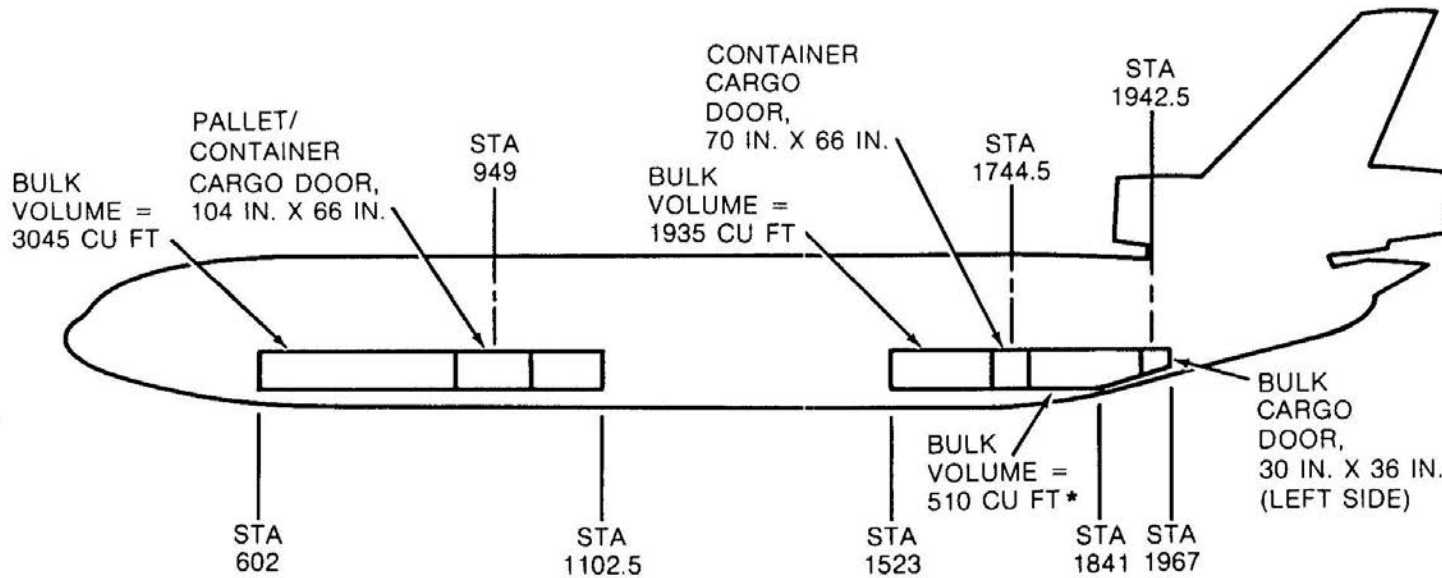
StartupBoeing



DC-10 Series Lower Hold Compartments

StartupBoeing

UPPER GALLEY CONFIGURATION



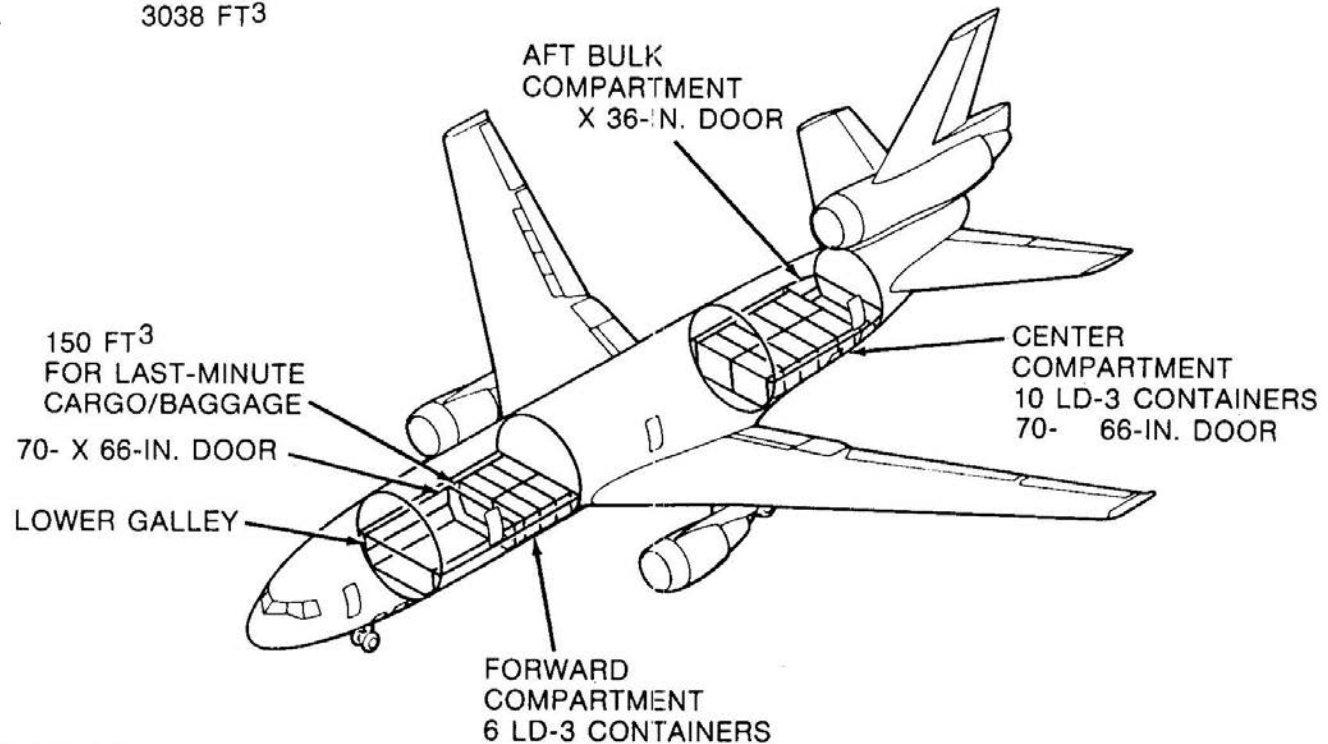
* EXTENDED CENTER CARGO COMPARTMENT

DC-10 Series Lower Hold Compartments

StartupBoeing

LOWER-GALLEY CONFIGURATION

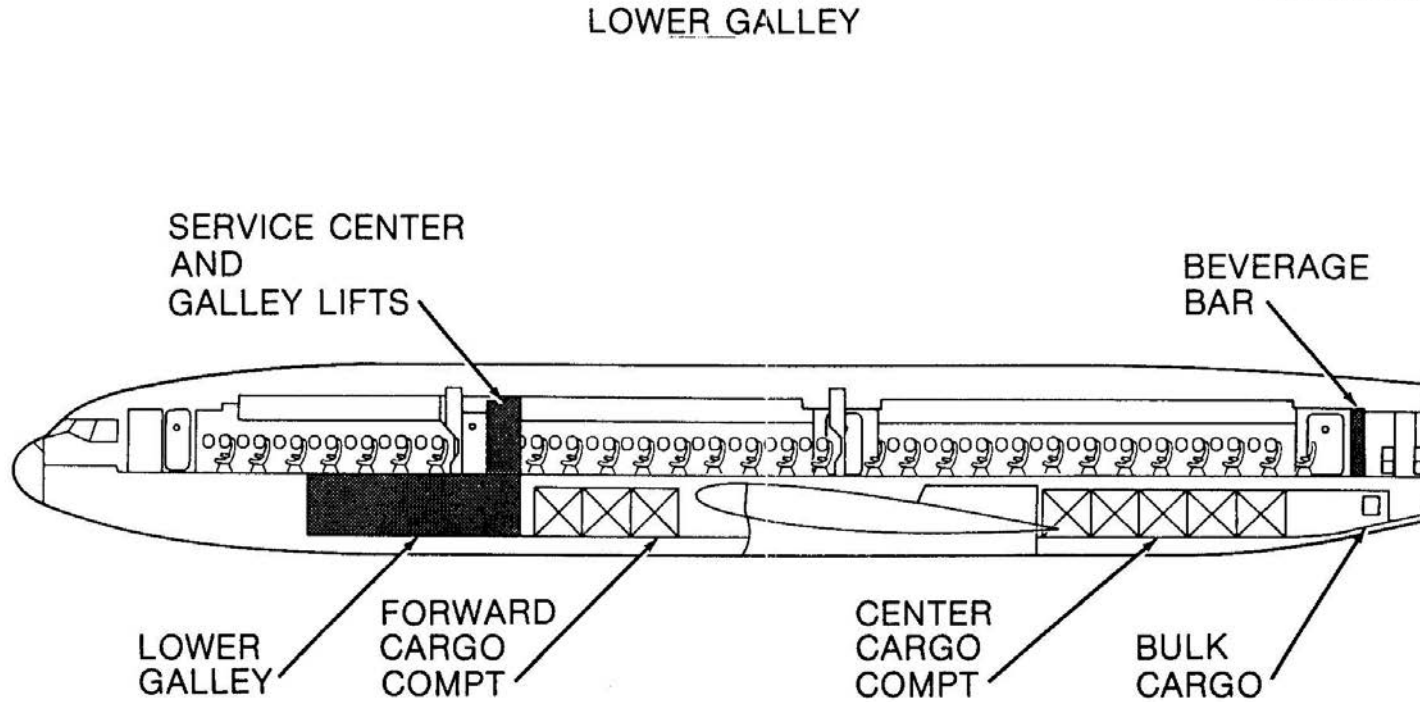
16 LD-3 CONTAINERS	2528
BULK CARGO	510 *
TOTAL	<u>3038 FT³</u>



* EXTENDED CENTER
CARGO DEPARTMENT

DC-10 Series Lower Hold Compartments

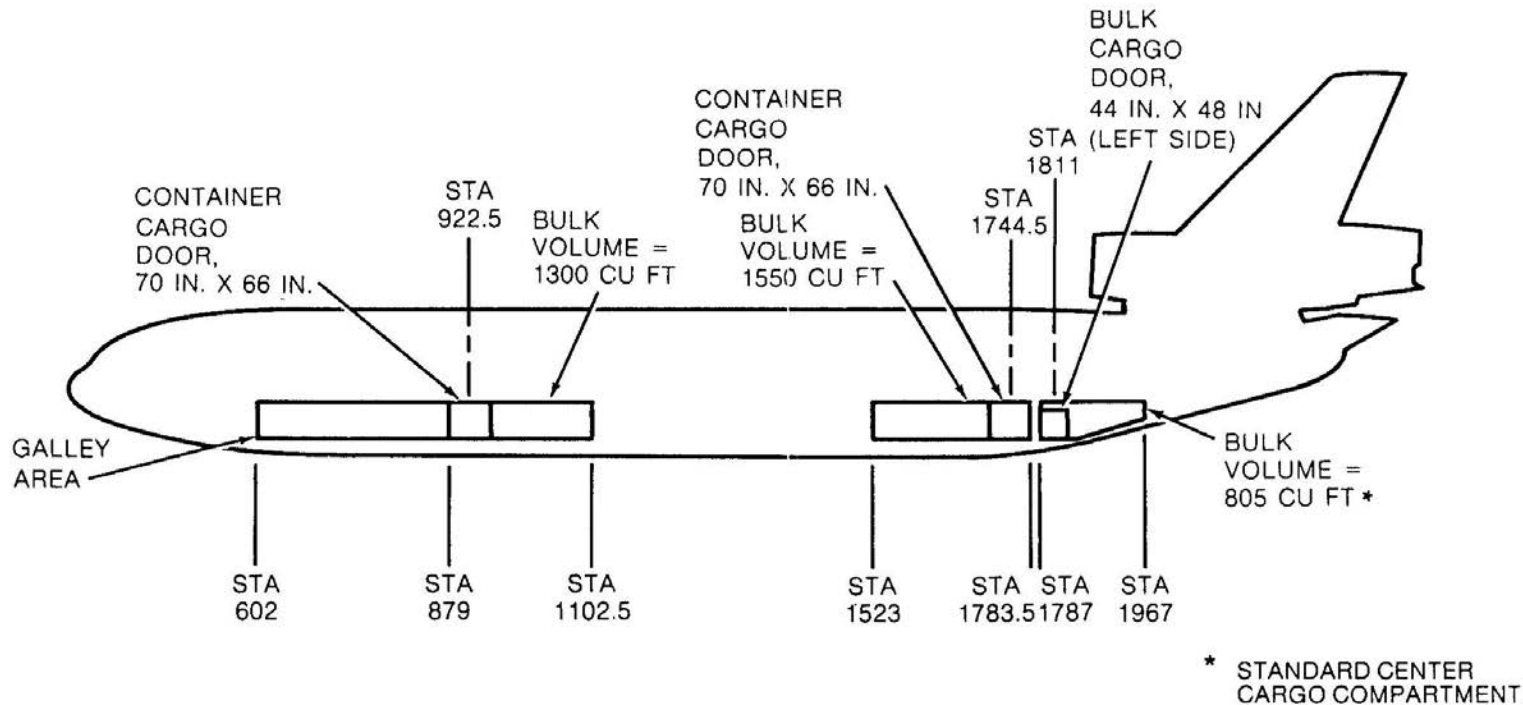
StartupBoeing



DC-10 Series Lower Hold Compartments

StartupBoeing

LOWER GALLEY CONFIGURATION



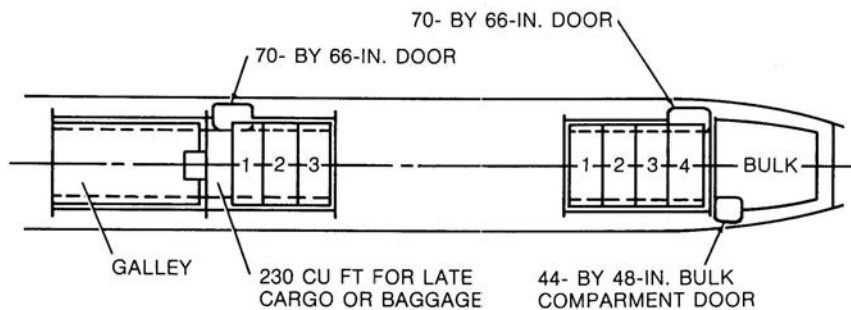
DC-10 Series Lower Hold Compartments

StartupBoeing

LOWER GALLEY

COMPARTMENT	WEIGHT (LB)	VOLUME (CU FT)		
FORWARD • 3 FULL-WIDTH CONTAINERS OR • 6 HALF-WIDTH CONTAINERS* OR • BULK	21,000	960 NET	948 NET	1300
CENTER • 4 FULL-WIDTH OR • 8 HALF-WIDTH CONTAINERS* OR • BULK	28,000	1280 NET	1264 NET	1550
AFT • BULK ONLY	12,000	805	805	805
TOTALS	61,000	3045	3017	3655

*PER ATA SPECIFICATION LD3

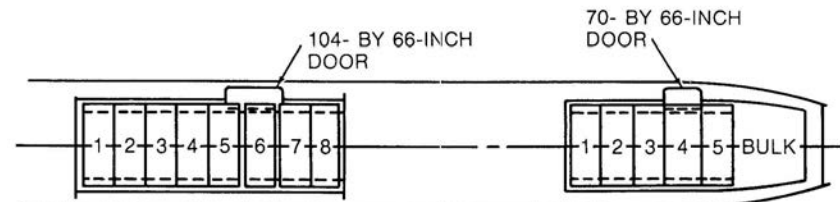


7 CONTAINERS 2240
BULK COMPARTMENT 805*
3045 CU FT

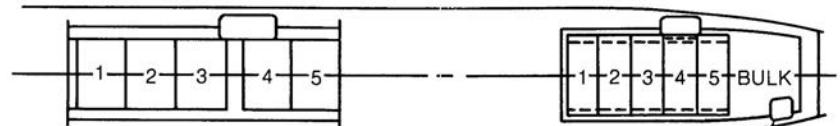
* STANDARD CENTER CARGO COMPARTMENT

UPPER GALLEY

COMPARTMENT	WEIGHT (LB)	VOLUME (CU FT)			
FORWARD • 8 FULL-WIDTH CONTAINERS • 16 HALF-WIDTH CONTAINERS • 5 PALLETS (88- BY 125-IN) • BULK	56,000	2560	2528	1890	3020
CENTER • 5 FULL-WIDTH CONTAINERS • 10 HALF-WIDTH CONTAINERS • BULK	35,000	1600	1580	1580	1935
AFT • BULK ONLY	7,500	510	510	510	510
TOTALS	98,500	4670	4618	3980	5465



13 LD6 OR 26 LD3 CONTAINERS ... 4160 CU FT
BULK COMPARTMENT 510
4670 CU FT TOTAL



5 PALLETS 1890 CU FT
5 LD6 OR 10 LD3 CONTAINERS ... 1600
BULK COMPARTMENT 510
4000 CU FT TOTAL

DC-10 Series Characteristics

StartupBoeing

SERIES		10****	30	40
MODE		PASSENGER	PASSENGER	PASSENGER
ENGINE		CF6-6D	CF6-50C	JT9D-59A *
MAXIMUM RAMP WEIGHT	POUNDS	433,000	558,000	558,000
	KILOGRAMS	196,406	253,105	253,105
MAXIMUM LANDING WEIGHT	POUNDS	363,500	403,000	403,000
	KILOGRAMS	164,881	182,798	182,798
MAXIMUM TAKEOFF WEIGHT	POUNDS	430,000	555,000	555,000
	KILOGRAMS	195,045	251,744	251,744
OPERATING WEIGHT EMPTY	POUNDS	240,171	266,191	270,213
	KILOGRAMS	108,940	120,742	122,567
MAXIMUM ZERO FUEL WEIGHT	POUNDS	335,000	368,000	368,000
	KILOGRAMS	151,954	166,922	166,922
MAXIMUM STRUCTURAL PAYLOAD (WEIGHT-LIMITED)	POUNDS	94,829	101,809	97,787
	KILOGRAMS	43,014	46,180	44,356
CARGO VOLUME (USING LD3 CONTAINERS)	CUBIC FEET	3,017	4,618**	4,618**
	CUBIC METERS	85.43	130.77	130.77
SEATING CAPACITY (STD/MAX)	STANDARD	270	255	255
	MAXIMUM	399	399	399
USABLE FUEL CAPACITY	U.S. GALLONS	21,762***	36,652	36,652
	LITERS	82,376	137,509	137,509

*FOR JT9D-20 ENGINE VERSION, SUBTRACT 515 POUNDS FROM OWE

**FOR NONEXTENDED CTR CARGO COMPARTMENT, REDUCE VOLUME 21 CU FT (SEE PAGE 27)

***FUEL CAPACITY WITH AUXILIARY CENTER WING TANK, 26,647 GALLONS

****SERIES 10 AVAILABLE AT HIGHER GROSS WEIGHT OPTION OF 458,000 POUNDS MAXIMUM RAMP WEIGHT

FOR 572,000-POUND MTOGW: ● ADD 379 POUNDS TO OWE AND SUBTRACT 379 POUNDS FROM MAXIMUM STRUCTURAL PAYLOAD

● INCREASE LANDING WEIGHT TO 421,000 POUNDS

DC-10 Series Characteristics

StartupBoeing

SERIES		10CF		30CF		40CF	
MODE		PSGR	CARGO	PSGR	CARGO	PSGR	CARGO
ENGINE		CF6-6D		CF6-50C		JT9D-59A*	
MAXIMUM RAMP WEIGHT	POUNDS	443,000	443,000	558,000	558,000	558,000	558,000
	KILOGRAMS	200,942	200,942	253,105	253,105	253,105	253,105
MAXIMUM LANDING WEIGHT	POUNDS	363,500	363,500	411,000	411,000	411,000	411,000
	KILOGRAMS	164,881	164,881	186,427	186,427	186,427	186,427
MAXIMUM TAKEOFF WEIGHT	POUNDS	440,000	440,000	555,000	555,000	555,000	555,000
	KILOGRAMS	199,581	199,581	251,744	251,744	251,744	251,744
OPERATING WEIGHT EMPTY	POUNDS	243,750	215,444	268,751	238,036	272,773	242,058
	KILOGRAMS	110,563	97,724	121,904	107,971	123,728	109,796
MAXIMUM ZERO FUEL WEIGHT	POUNDS	335,000	335,000	391,000	391,000	391,000	391,000
	KILOGRAMS	151,954	151,954	177,355	177,355	177,355	177,355
MAXIMUM STRUCTURAL PAYLOAD (WEIGHT LIMITED)	POUNDS	91,250	119,556	122,249	152,964	118,227	148,942
	KILOGRAMS	41,390	54,230	55,451	69,383	53,627	67,559
MAXIMUM CARGO VOLUME	CUBIC FEET	4,597	16,845	4,618	16,866	4,618	16,866
	CUBIC METERS	130.17	477.05	130.77	477.65	130.77	477.65
SEATING CAPACITY (STD/MAX)	STANDARD	255	0	255	0	255	0
	MAXIMUM	399	0	399	0	399	0
USABLE FUEL CAPACITY	U.S. GALLONS	21,762***	21,762***	36,652	36,652	36,652	36,652
	LITERS	82,376	82,376	137,509	137,509	137,509	137,509

* FOR JT9D-20 ENGINE VERSION, SUBTRACT 515 POUNDS FROM OWE

** FOR NONEXTENDED CTR CARGO COMPARTMENT, REDUCE VOLUME 21 CU FT (SEE PAGE 27)

***FUEL CAPACITY WITH AUXILIARY CENTER WING TANK, 26,647 GALLONS

FOR 572,000 POUND MTOGW: • ADD 379 POUNDS TO OWE AND SUBTRACT 379 POUNDS FROM MAXIMUM STRUCTURAL PAYLOAD
• INCREASE LANDING WEIGHT TO 421,000 POUNDS

DC-10 Series Engine Characteristics

StartupBoeing

GENERAL ELECTRIC CF6 FAMILY OF ENGINES

		-6D	-6D1	-6D1A	-50C	-50C1	-50C2	-50C2B	-50C2F
TAKEOFF THRUST (LB)		40,000	41,000	41,500	51,000	52,500	52,500	54,000	46,500
IDEAL NOZZLE *(N)		177,920	182,368	184,592	226,848	233,520	233,520	240,192	206,832
TAKEOFF FLAT RATED TEMP (°F)		88	88	88	86	86	86	79	110
RATED TEMP (°C)		31	31	31	30	30	30	27	43
MAX CRUISE THRUST (M 0.85) (LB)		9,060	9,200	9,200	10,300	11,300	11,300	11,300	11,300
	(N)	40,298	40,921	40,921	48,038	50,262	50,262	50,262	50,262
ENGINE SPECIFICATION WEIGHT (LB)		8,111	8,111	8,111	8,936	8,936	8,936	8,936	8,936
	(kg)	3,679	3,679	3,679	4,053	4,053	4,053	4,053	4,053
CRUISE SPECIFIC FUEL CONSUMPTION (Δ FROM BASE)		BASE	SAME	SAME	BASE	SAME	-2%	-2%	-2%
DIFFERENCES FROM BASE CONFIGURATION		-6D, -6D1, AND -6D1A HAVE IDENTICAL PARTS			BASE	REVISED FUEL CONTROL SYSTEM	NEW FAN, STIFFENED FAN CASE, RESCHEDULED VARIABLE STATOR VANES		

*N (NEWTON)

DC-10 Series Engine Characteristics

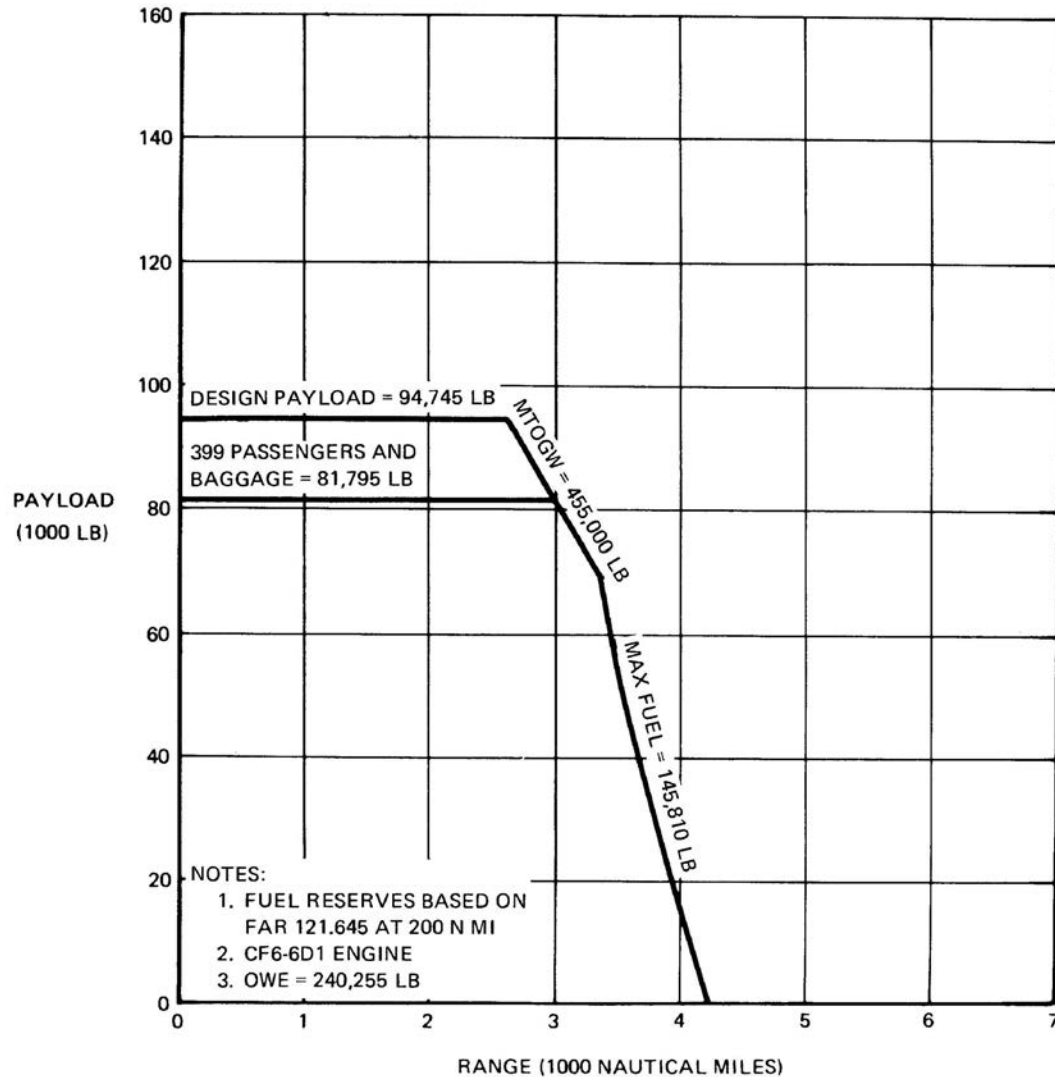
StartupBoeing

PRATT & WHITNEY JT9D FAMILY OF ENGINES

	-20	-59A
TAKEOFF THRUST (LB)	45,700	53,000
IDEAL NOZZLE (N)	203,273	235,744
TAKEOFF FLAT RATED TEMP (°F)	84	86
(°C)	29	30
MAX CRUISE THRUST (LB)	10,680	11,950
(N)	47,504	53,153
(M 0.85, 35,000 FT)		
CRUISE FLAT RATED TEMP (°F)	STD + 18	STD + 18
CRUISE SPECIFIC FUEL CONSUMPTION	BASE	-1.8%
ENGINE SPEC WEIGHT (LB)	8450	9140
(KG)	3832.9	4145.9
DIFFERENCES FROM BASE CONFIGURATION	BASE	ALL NEW ENGINE EXCEPT HIGH-PRESSURE COMBUSTION IS SAME

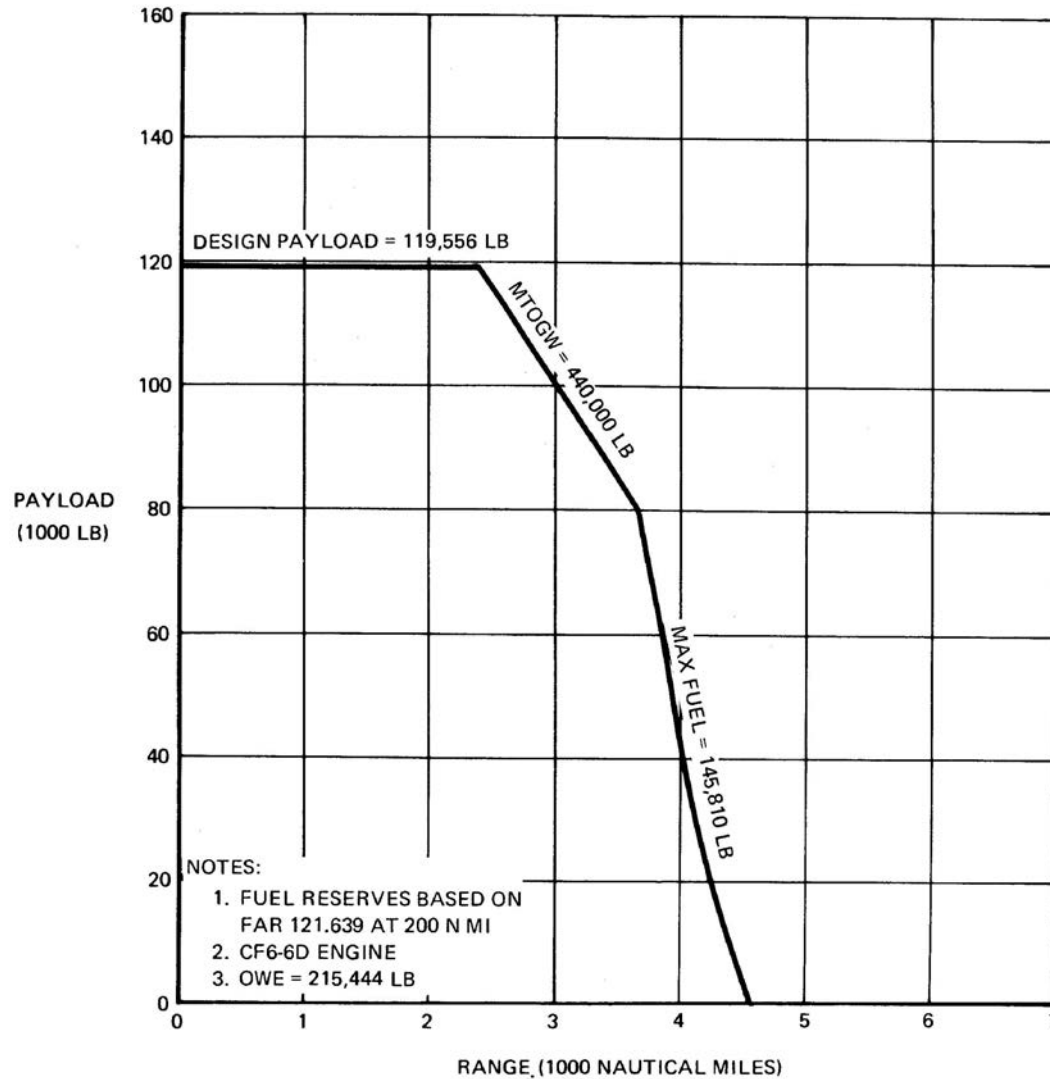
DC-10-10 Payload-Range

StartupBoeing



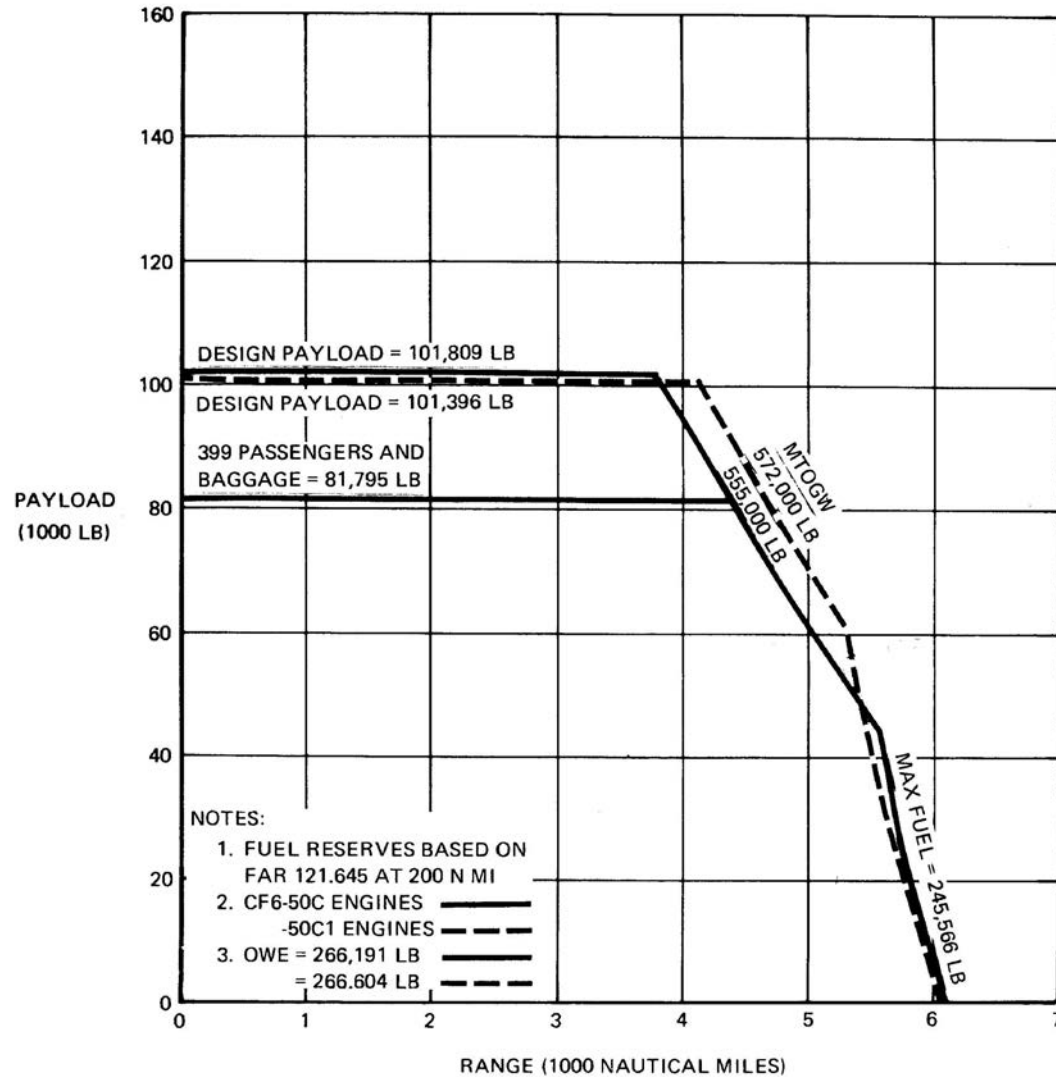
DC-10-10CF Payload-Range (All Cargo Mode)

StartupBoeing



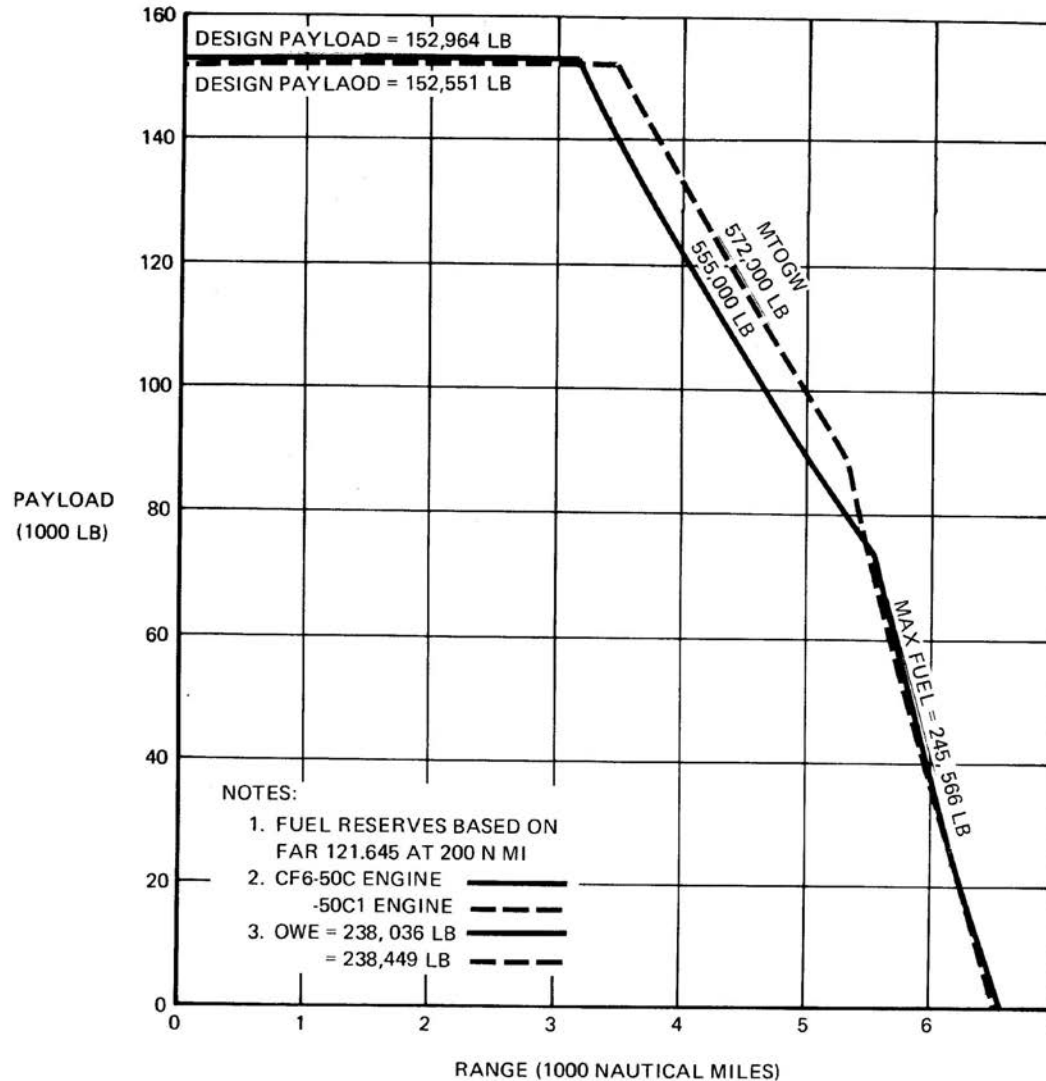
DC-10-30 Payload-Range

StartupBoeing



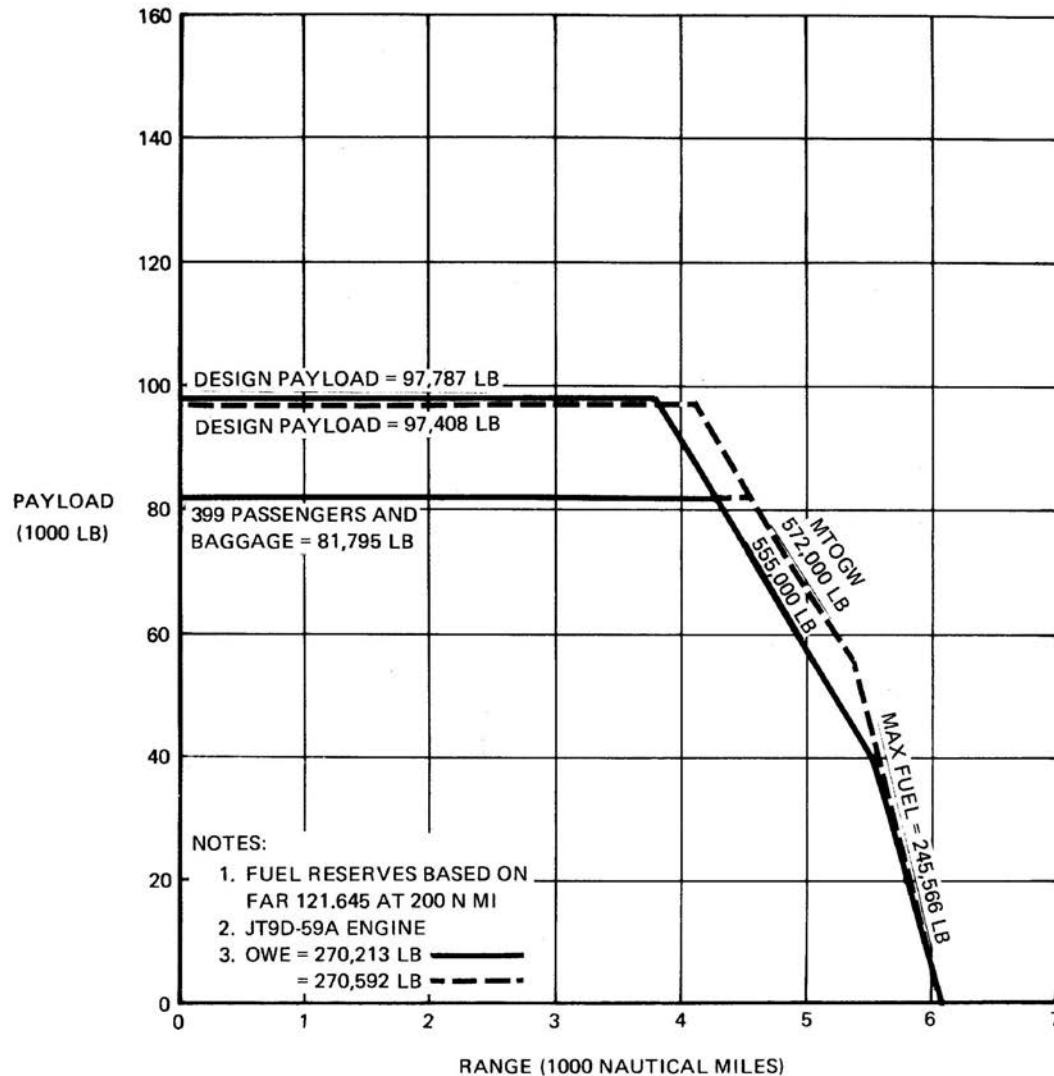
DC-10-30CF Payload-Range (All Cargo Mode)

StartupBoeing



DC-10-40 Payload-Range

StartupBoeing



DC-10-40CF Payload-Range (All Cargo Mode)

StartupBoeing

